



Showpiece  
DESIGN



FURNITURE | AWNINGS | UMBRELLAS | PERGOLAS | ROOF SYSTEMS

EDITION 25





CONTENTS

TIMBER FURNITURE

- 12 Blewbury
- 20 Roble
- 24 Cotswold
- 28 Chiltern
- 32 Malvern
- 36 Scaffold
- 38 Gabion

METAL FURNITURE

- 68 Zanzibar
- 72 Venice
- 76 Toulouse
- 84 Cassis
- 88 Madrid
- 92 Table Tops
- 94 Table Bases

WEAVE FURNITURE

- 40 Bali
- 42 Havana
- 46 Maldives
- 48 Bordeaux

ACCESSORIES

- 96 Parasols & Bases
- 104 Heaters
- 106 Banners
- 108 Planters
- 112 Cushion Boxes

ROPE FURNITURE

- 52 Padstow
- 58 Casablanca
- 62 Bude NEW FOR 2025

COVER SOLUTIONS

- 116 Pergolas
- 120 Awnings
- 122 Giant Umbrellas
- 124 Roof Systems



## INTRODUCTION

Showpiece Design has been supplying the hospitality industry for 25 years. We take pride in overseeing the whole process through design layout to manufacture, delivery and installation including removal and recycling of all waste packaging and the all important after sales service. With our highly trained staff, high stock levels and attention to detail, we are able to meet tight deadlines and offer outstanding service.

Our office and large warehouse facility is located in Berkshire meaning we are ideally placed to service anywhere in the country. Our products are sourced from the best British manufacturers and also imported from Europe and afar enabling us to offer high quality with great value, delivered quickly and efficiently to your sites. We also manufacture bespoke furniture to meet your exacting requirements.

We are constantly reviewing and expanding our portfolio to offer new and exciting products and ideas to help keep you one step ahead. If you are looking for something unique that we don't currently offer, we will work with you to design and source it - let us do the hard work.

## WHY CHOOSE US?

We hold stock and can usually deliver and install within 7 days.

We offer white glove delivery including assembly and installation as standard and at no extra charge. We remove and recycle all waste packaging.

Our sales experts will carry out a site visit to help plan your space and advise on product selection. We can produce floorplans and renders as part of your proposal.

We can supply everything needed to set up or improve your outdoor space including a wide range of furniture, cover solutions and partitioning. If we don't stock it, we can source it.

Many of our products can be branded and can be matched to your brand colours to make your outdoor space completely unique to you.





## SECTORS

We have worked with some of the biggest names in U.K hospitality and have built long standing relationships due to our efficient and conscientious service. We work with the following sectors:

- Interior Designers & Architects
- Pubs
- Hotels
- Golf Clubs / Sports Clubs
- Restuarants
- Holiday Parks
- Cafes
- Spas
- Care Homes
- Schools & Universities
- Offices
- Parks & Public Spaces
- Landscapers

## BLEWBURY

The Blewbury range showcases beautiful and durable hardwood outdoor furniture made from 100% FSC Acacia. This dense hardwood is a rich brown colour with an attractive marbled grain. The durability of this timber is comparable to that of Teak and has an expected lifespan in excess of 15 years. The timber will weather to a silvery grey over time, or a timber treatment can be applied annually to maintain the colour for longer and protect from food and drink stains.







BLEWBURY



Dining Chair

Code BB1423  
 Height 86cm  
 Width 45cm  
 Depth 59cm



Armchair

Code BB1401  
 Height 86cm  
 Width 53cm  
 Depth 59cm



Seat Pad

Code BB1401-C



Bar Height Chair

Code BB1415  
 Height 105cm  
 Width 40cm  
 Depth 51cm



Bar Table 0.8m<sup>2</sup>

Code BB1414  
 Height 105cm  
 Width 80cm  
 Depth 80cm



Bar

Code BB1416  
 Height 105cm  
 Width 120cm  
 Depth 60cm



Dining Table 0.8m<sup>2</sup>

Code BB1402  
 Height 74cm  
 Width 80cm  
 Depth 80cm



Dining Table 1.0m<sup>2</sup>

Code BB1425  
 Height 74cm  
 Width 100cm  
 Depth 100cm



Dining Table 1.3m

Code BB1404  
 Height 74cm  
 Width 130cm



Lounge Chair w/Cushions

Code BB1412  
 Height 76cm  
 Width 70cm  
 Depth 71cm



2 Seater Sofa w/Cushions

Code BB1411  
 Height 76cm  
 Width 140cm  
 Depth 71cm



Coffee Table 1.0m x 0.5m

Code BB1413  
 Height 35cm  
 Width 107cm  
 Depth 50cm



Dining Table 1.2m x 0.8m

Code BB1426  
 Height 74cm  
 Width 120cm  
 Depth 80cm



Dining Table 1.6m x 0.8m

Code BB1403  
 Height 74cm  
 Width 160cm  
 Depth 80cm



Timber Protector



4ft Bench

Code BB1405  
 Height 86cm  
 Width 120cm  
 Depth 59cm



4ft Backless Bench

Code BB1420  
 Height 45cm  
 Width 120cm  
 Depth 38cm



Sun Lounger Textilene Sling

Code BB1408  
 Height 30cm  
 Width 60cm  
 Depth 202cm



\*The chair above shows how a Blewbury chair will likely look after being exposed to the elements for 3-6 months. The left side has had a treatment applied, the right side is untreated and has started to silver.



## ROBLE

The Roble range is made from 100% FSC Roble timber. Roble is a very dense and durable hardwood that will last for many years, even in the most inclement weather. It is light yellow in colour with a smooth lustre. Roble timber can be left to mellow to a silvery grey or treatment can be applied annually to maintain the colour for longer and prevent staining from food and drink.





Stacking Armchair

Code AR150HB  
 Height 84cm  
 Width 60cm  
 Depth 60cm



Dining Table 0.8m<sup>2</sup>

Code AR156  
 Height 75cm  
 Width 80cm  
 Depth 80cm



Dining Table 1.5m x 1m

Code AR157  
 Height 75cm  
 Width 103cm  
 Depth 150cm



Lounge Chair w/Cushions

Code AR121  
 Height 90cm  
 Width 76cm  
 Depth 85cm



2 Seater Sofa w/Cushions

Code AR122  
 Height 90cm  
 Width 140cm  
 Depth 85cm



Corner Module w/Cushions

Code AR161  
 Height 90cm  
 Width 85cm  
 Depth 85cm



Dining Table 1.25m

Code AR159X  
 Height 73cm  
 Width 125cm



Adirondack Chair & Stool

Code ADR101  
 Height 100cm  
 Width 73cm  
 Depth 156cm

Teak



Middle Module w/Cushions

Code AR162  
 Height 90cm  
 Width 68cm  
 Depth 85cm



Left Hand Module w/Cushions

Code AR165  
 Height 90cm  
 Width 68cm  
 Depth 85cm



Right Hand Module w/Cushions

Code AR164  
 Height 90cm  
 Width 68cm  
 Depth 85cm



4ft Bench

Code AR104  
 Height 87cm  
 Width 122cm  
 Depth 60cm



Royal Park Bench 5ft

Code HW137  
 Height 92cm  
 Width 153cm  
 Depth 63cm



Royal Park Bench 6ft

Code HW134  
 Height 92cm  
 Width 183cm  
 Depth 63cm



Coffee Table 0.8m<sup>2</sup>

Code AR125  
 Height 43cm  
 Width 80cm  
 Depth 80cm



Coffee Table 1.2m x 0.7m

Code AR155  
 Height 43cm  
 Width 68cm  
 Depth 120cm

## COTSWOLD

The Cotswold range is a timeless classic and all pieces are folding, making it the perfect choice for cafes and bistros. The frames are made from heavy weight steel, powder coated black with Robinia hardwood slats. Cotswold consists of 3 sizes of folding tables, a folding side chair and folding bench, all built with durability and easy storage in mind.





Folding Dining Chair

Code	TM003/C
Height	87cm
Width	43cm
Depth	60cm



Folding Dining Table 0.7m<sup>2</sup>

Code	TM002/T
Height	74cm
Width	70cm
Depth	70cm



Folding Dining Table 0.85m

Code	TM003/T
Height	74cm
Width	85cm



Folding Dining Table 1.2m x 0.8m

Code	TM004
Height	74cm
Width	120cm
Depth	80cm



Folding 4ft Bench

Code	TM005
Height	80cm
Width	120cm
Depth	74cm



## CHILTERN

Chiltern is a modern take on classic hardwood furniture designs. The black powder coated frames are complimented by Robinia hardwood slats that come pre-treated, ready for outdoor use. It is easy to mix and match within the Chiltern range with 3 sizes of dining table and an ergonomic dining chair, alongside 4 sizes of bar table and a backless bar stool. The dining chair stacks, allowing for easy storage.



# CHILTERN



**Stacking Armchair**

Code CHILT001  
 Height 84cm  
 Width 54cm  
 Depth 67cm



**Dining Table 0.8m²**

Code CHILT003  
 Height 74cm  
 Width 80cm  
 Depth 80cm



**Dining Table 1.2m x 0.7m**

Code CHILT004/S  
 Height 74cm  
 Width 120cm  
 Depth 70cm



**Bar Stool**

Code CHILT005  
 Height 80cm  
 Width 35cm  
 Depth 35cm



**Bar Table 0.6m²**

Code CHILT006  
 Height 110cm  
 Width 60cm  
 Depth 60cm



**Bar Table 0.8m²**

Code CHILT008  
 Height 110cm  
 Width 80cm  
 Depth 80cm



**Dining Table 1.5m x 0.8m**

Code CHILT004  
 Height 74cm  
 Width 150cm  
 Depth 80cm



**Backless Bench**

Code CHILT002  
 Height 45cm  
 Width 130cm  
 Depth 40cm



**Bar Table 1.2m x 0.6m**

Code CHILT007  
 Height 110cm  
 Width 120cm  
 Depth 60cm



**Bar Table 1.5m x 0.8m**

Code CHILT009  
 Height 110cm  
 Width 150cm  
 Depth 80cm



## MALVERN

The Malvern range consists of heavy duty, picnic style furniture. Made from FSC treated Pine or hardwood Acacia, these rustic sets seat 6-8 people in space saving designs. Any of the Malvern sets can be easily fitted to patio slabs or terrace decking using bolt down anchors. The Pine sets can be treated or painted to any RAL colour.





**6ft A-Frame Table**

Code WR301  
 Height 68cm  
 Width 180cm  
 Depth 129cm



**6ft A-Frame Wheelchair Table**

Code WR302  
 Height 68cm  
 Width 180cm  
 Depth 129cm



**Roundabout 6 Seater Table**

Code WR014  
 Height 81cm  
 Width 200cm  
 Depth 200cm



**Roundabout 8 Seater Table**

Code WR019  
 Height 77cm  
 Width 188cm  
 Depth 188cm



**Roundabout 8 Seater Large Table**

Code WR013  
 Height 81cm  
 Width 250cm  
 Depth 250cm



**All Square 8 Seater Table**

Code WR010  
 Height 81cm  
 Width 210cm  
 Depth 210cm



**Lakeside Picnic Set**

Code WR060  
 Height 79cm  
 Width 180cm  
 Depth 160cm



**Kos Picnic Set**

Code KOS001  
 Height 76cm  
 Width 200cm  
 Depth 140cm



**Waiter Station**

Code WR030  
 Height 110cm  
 Width 150cm  
 Depth 70cm

## SCAFFOLD

The Scaffold range is made from heavy duty FSC Pine table tops, fitted onto galvanised steel scaffold style frames. All Scaffold tables, benches and stools are made to order in our workshop and can be made to your exacting size (to a maximum of 4m long) and in either dining, mid and bar height. The table tops can be supplied in a natural colour or stained or painted to any RAL colour. The steel framework can also be powder coated to any RAL colour.



Dining Height Table

Code SCAF001



Bar Height Table

Code SCAF001



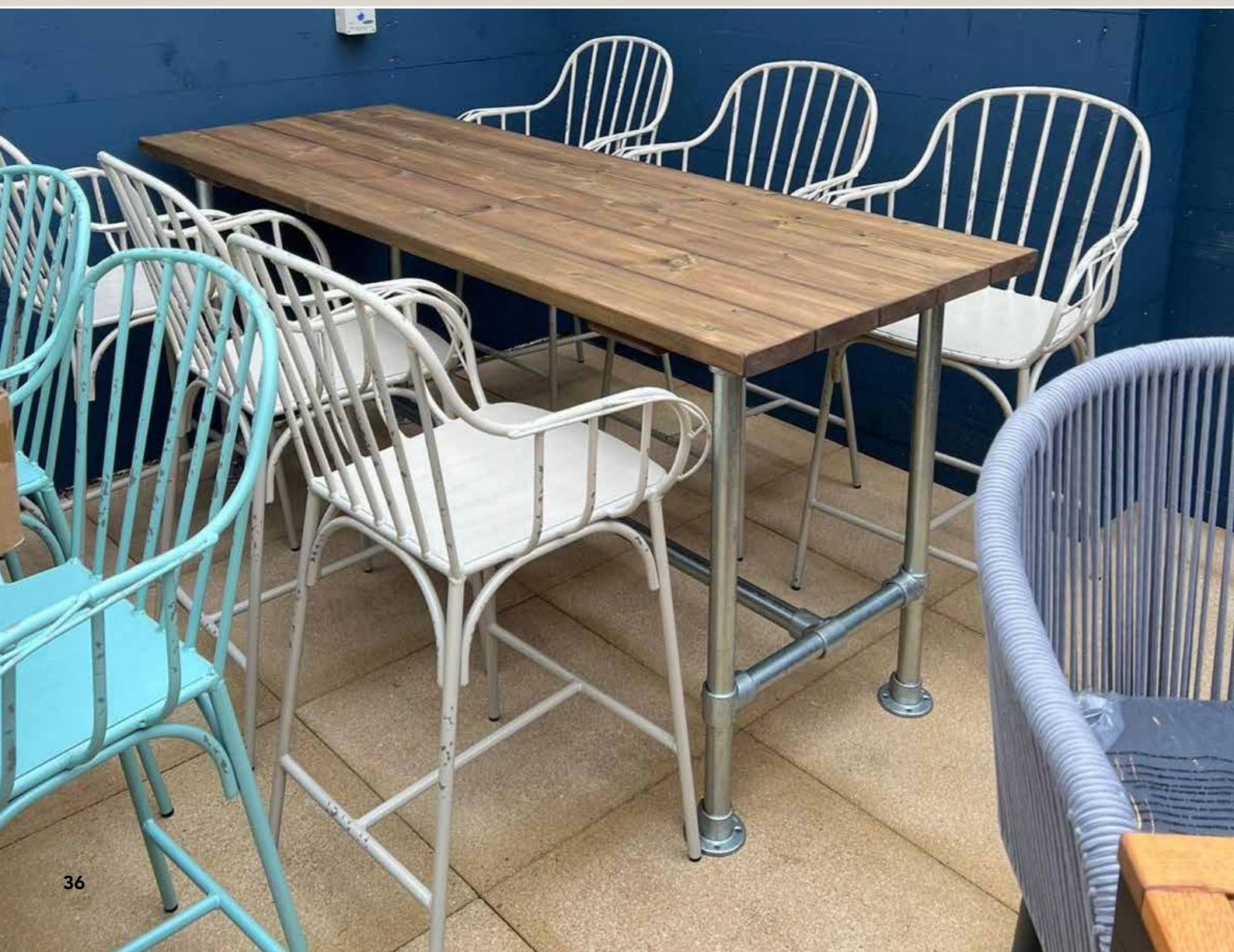
Dining Height Stool/Bench

Code SCAF002



Bar Height Stool/Bench

Code SCAF002



## GABION

The Gabion range of tables and benches are the ideal solution for those looking for heavy duty, yet stylish outdoor furniture. Fully galvanised steel cages are filled with large rocks and finished with FSC Pine timber bench seats and table tops. Gabion tables and benches are made to order in our workshop and can therefore be made to your exacting size. The table tops can be supplied in a natural colour or stained or painted to any RAL colour.



Sizes made to order

**Gabion Bar Table**

Code GABHIGH



Sizes made to order

**Gabion Bar Stool**

Code GABHIGH



Sizes made to order

**Gabion Dining Table**

Code GABDINE



Sizes made to order

**Gabion Dining Bench**

Code GABDINE



## BALI

The Bali range is made from highly durable synthetic weave, handwoven onto fully welded, powder coated aluminium frames. The tempered glass table tops are finished in a stone effect to compliment the two tone colour of the Bali weave. With 3 spacious table sizes available and a comfortable armchair with fibre filled cushion, Bali is the perfect fit for large dining terraces. We have introduced a new, luxurious cushion fabric for 2025.



Armchair w/Cushion

Code	WR100
Height	86cm
Width	57cm
Depth	65cm

Dining Table 0.9m<sup>2</sup>

Code	WR102
Height	72cm
Width	90cm
Depth	90cm



Dining Table 1.4m

Code	WR101
Height	72cm
Width	140cm



Dining Table 1.8m x 0.9m

Code	WR103
Height	72cm
Width	180cm
Depth	90cm



## HAVANA

Havana is our most popular weave range, consisting of 3 stacking chairs and a 90cm<sup>2</sup> table with an aluminium, wood effect top. The half round, multi tonal grey weave is hand woven onto the powder coated aluminium frame and has been selected to suit any outdoor setting. The 10-seater Havana corner sofa with deep seating, fibre filled cushions is perfect for large group settings.



# HAVANA



**Stacking Side Chair Grey**

Code HW522  
 Height 82cm  
 Width 46cm  
 Depth 53cm



**Stacking Armchair Grey**

Code HW523  
 Height 82cm  
 Width 56cm  
 Depth 60cm



**Stacking Armchair Black**

Code HW453  
 Height 82cm  
 Width 56cm  
 Depth 60cm



**Stacking Armchair Grey w/Cushion**

Code HW525  
 Height 83cm  
 Width 57cm  
 Depth 56cm



**Dining Table Polywood Top 0.9m²**

Code HW521  
 Height 75cm  
 Width 90cm  
 Depth 90cm



**Left Hand Sofa w/Cushions**

Code (set) HW520  
 Height 88cm  
 Width 197cm  
 Depth 63cm



**Right Hand Sofa w/Cushions**

Code (set) HW520  
 Height 88cm  
 Width 197cm  
 Depth 63cm



**Bench Seat w/Cushion**

Code (set) HW520  
 Height 55cm  
 Width 153cm  
 Depth 35cm



**Rectangular Table 1.5m x 0.85m**

Code (set) HW520  
 Height 87cm  
 Width 153cm  
 Depth 85cm



**MALDIVES**

Maldives is the perfect blend between classic and contemporary design, with traditional basket style weave chairs complimented by wood effect aluminium tapered legs. Available in multi tonal grey or brown, the table tops are made from tempered glass with a stone effect finish. The armchairs come with a cosy, fibre filled cushion for ultimate comfort.



**Armchair Grey w/Cushion**

Code	MALD001
Height	87cm
Width	57cm
Depth	63cm

**Armchair Brown w/Cushion**

Code	MALD006
Height	87cm
Width	57cm
Depth	63cm



**Dining Table Grey 0.8m<sup>2</sup>**

Code	MALD004
Height	75cm
Width	81cm
Depth	81cm

**Dining Table Brown 0.8m<sup>2</sup>**

Code	MALD007
Height	75cm
Width	81cm
Depth	81cm

**Dining Table Grey 1.2m x 0.8m**

Code	MALD005
Height	75cm
Width	120cm
Depth	80cm





## BORDEAUX

The Bordeaux range is perfect for cafes and bistros with space saving footprints, stacking chairs for easy storage and low maintenance. The exposed aluminium frames are hand painted in a wood effect finish and the chair seat and backs have been handwoven with a durable PE rattan. The table tops are made from Polywood slats.





Stacking Armchair

Code BORD001  
 Height 90cm  
 Width 56cm  
 Depth 59cm



Dining Table 0.7m<sup>2</sup>

Code BORD002  
 Height 74cm  
 Width 70cm  
 Depth 70cm



Dining Table 1.3m x 0.7m

Code BORD003  
 Height 74cm  
 Width 130cm  
 Depth 70cm



Stacking Bistro Chair

Code HW300  
 Height 88cm  
 Width 46cm  
 Depth 53cm

## PADSTOW

Padstow is our most popular range and it is clear to see why as it encapsulates the current trend of sleek rope furniture. Consisting of 2 stylish stacking armchairs and a slimline 2 seater sofa, a bar stool available in mid height and bar height and 3 large and comfy sofa sets and an adjustable sunlounger, all with weather resistant cushions. Padstow is designed to be left out year-round and is practically maintenance free.







Rope Stacking Armchair

Code	WR251
Height	76cm
Width	56cm
Depth	61cm



Rope Stacking Armchair w/Cushions

Code	WR250
Height	78cm
Width	56cm
Depth	60cm



Wood Effect Armchair w/Cushion

Code	WR259
Height	76cm
Width	56cm
Depth	61cm



Rope Mid & Bar Height Chair w/Cush

Code (mid)	WR253
Code (bar)	WR252
Height (mid)	102cm
Height (bar)	107cm
Width	56cm
Depth	60cm



Rope 2 Seater Sofa w/Cushions

Code	WR249
Height	73cm
Width	161cm
Depth	82cm



Rope 4 Pcs Sofa Set w/Cushions

Code	WR256
Height	70cm
Width	319cm
Depth	152cm



Rope Corner Sofa Set w/Cushions

Code	WR254
Height	70cm
Width	228cm
Depth	145cm



Rope Wood Effect Sofa Set w/Cush

Code	WR255
Height	74cm
Width	360cm
Depth	155cm



Wood Effect Sun Lounger w/Cushion

Code	WR257
Height	57cm
Width	75cm
Depth	198cm



## CASABLANCA

The Casablanca range is the ultimate in comfort and luxury. Manufactured using weatherproof marine grade rope with a thick rubber core to allow quick drying, the Casablanca is built to withstand all weathers. The tactile rope is handwoven onto strong and durable aluminium frames and the products are finished off with fibre filled, weather resistant cushions. There is a side table or coffee table to choose from to compliment the seating, which for 2025 is available in light grey only.





Armchair Light Grey w/Cushion

Code	AR7561LG
Height	83cm
Width	72cm
Depth	66cm



Lounge Chair Light Grey w/Cushions

Code	AR7563LG
Height	88cm
Width	88cm
Depth	82cm



2 Seater Sofa Light Grey w/Cushions

Code	AR7562LG
Height	88cm
Width	141cm
Depth	82cm



Coffee Table HPL Top 0.6m

Code	AR7548GRPEB
Height	40cm
Width	60cm



Coffee Table HPL Top 1.2m x 0.6m

Code	AR7547GRPEB
Height	40cm
Width	120cm
Depth	85cm

NEW FOR  
2025

## BUDE

### Exclusive to Showpiece Design

We are pleased to introduce our new and exclusive range for 2025 - Bude. Striking design, low-maintenance and comfort were the 3 key features when designing this range. The armchairs, side chairs and bar chairs come in a choice of 4 colours and the tables, with sleek aluminium frames have a choice of concrete, stone or timber effect tops. Designed to be left outside year-round, the rope has a rubber core for quick drying time, and the aluminium frames have a wood-effect finish.







Side Chair Olive

Code BUD005/O  
 Height 82cm  
 Width 55cm  
 Depth 47cm



Side Chair Terracotta

Code BUD005/TE  
 Height 82cm  
 Width 55cm  
 Depth 47cm



Side Chair Grey

Code BUD005/G  
 Height 82cm  
 Width 55cm  
 Depth 47cm



Side Chair Taupe

Code BUD005/T  
 Height 82cm  
 Width 55cm  
 Depth 47cm



Armchair Olive w/Cushion

Code BUD002/O  
 Height 76.5cm  
 Width 65cm  
 Depth 57cm



Armchair Terracotta w/Cushion

Code BUD002/TE  
 Height 76.5cm  
 Width 65cm  
 Depth 57cm



Armchair Grey w/Cushion

Code BUD002/G  
 Height 76.5cm  
 Width 65cm  
 Depth 57cm



Armchair Grey w/Cushion

Code BUD002/T  
 Height 76.5cm  
 Width 65cm  
 Depth 57cm

NEW FOR  
**2025**



Bar Height Chair Olive w/Cushion

Code BUD003/O  
Height 97cm  
Width 65cm  
Depth 57cm

Bar Height Chair Terracotta w/Cushion

Code BUD003/TE  
Height 97cm  
Width 65cm  
Depth 57cm

Bar Height Chair Grey w/Cushion

Code BUD003/G  
Height 97cm  
Width 65cm  
Depth 57cm

Dining Table 0.75m² Concrete

Code BUD006/C  
Height 75cm  
Width 75cm  
Depth 75cm

Dining Table 0.75m² Wood

Code BUD006/W  
Height 75cm  
Width 75cm  
Depth 75cm

Dining Cross Base Table 0.9m

Code BUD009  
Height 75cm  
Width 90cm  
Depth 90cm



Bar Height Chair Taupe w/Cushion

Code BUD003/T  
Height 97cm  
Width 65cm  
Depth 57cm

Mid Height Chair Olive w/Cushion

Code BUD004/O  
Height 87cm  
Width 65cm  
Depth 57cm

Mid Height Chair Terracotta w/Cushion

Code BUD004/TE  
Height 87cm  
Width 65cm  
Depth 57cm

Dining Cross Base Table 0.9m²

Code BUD010  
Height 75cm  
Width 90cm  
Depth 90cm

Dining Table 1.2m x 0.75m Concrete

Code BUD007/C  
Height 75cm  
Width 120cm  
Depth 75cm

Dining Table 1.2m x 0.75m Wood

Code BUD007/W  
Height 75cm  
Width 120cm  
Depth 75cm



NEW FOR  
**2025**

Mid Height Chair Grey w/Cushion

Code BUD004/G  
Height 87cm  
Width 65cm  
Depth 57cm

Mid Height Chair Taupe w/Cushion

Code BUD004/T  
Height 87cm  
Width 65cm  
Depth 57cm



NEW FOR  
**2025**

Dining Table 1.5m x 0.75m Concrete

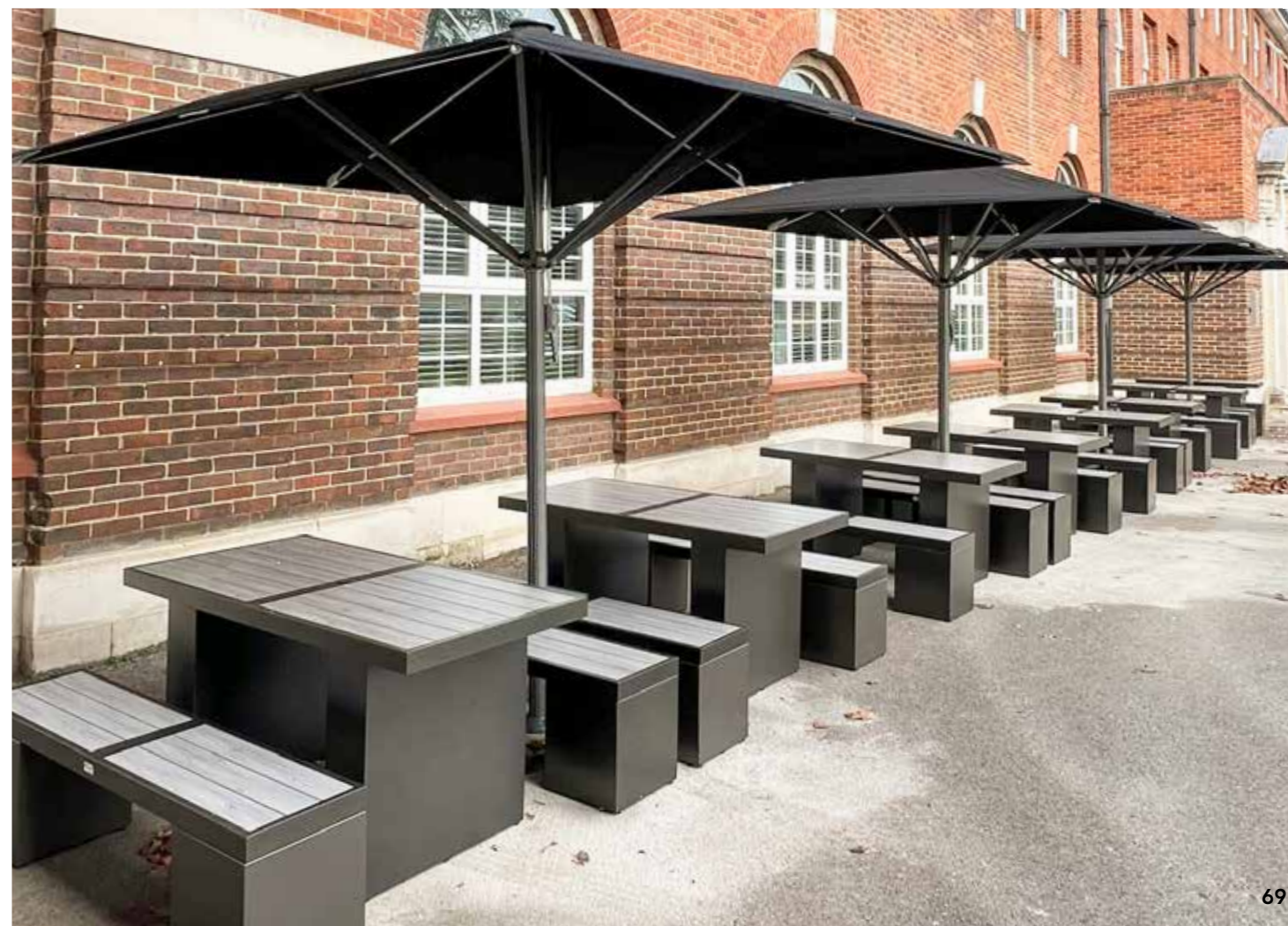
Code BUD008/C  
Height 75cm  
Width 150cm  
Depth 75cm

Dining Table 1.5m x 0.75m Wood

Code BUD008/W  
Height 75cm  
Width 150cm  
Depth 75cm

## ZANZIBAR

Zanzibar is made entirely from powder coated aluminium so is the perfect solution for those wanting low maintenance furniture that can be left outside year round. It is typically fixed down to patio slabs or decking in venues where security is an important factor. The modular style designs can be used in multiple configurations and can be paired together if wanting a larger dining set. Both dining and bar height tables and benches are available. The spacious Farmer's set has a traditional style cross base and comfortably seats up to 8 people.





Dining Table 0.9m2

Code ZB004  
 Height 72cm  
 Width 90cm  
 Depth 90cm



Dining Table 1.5m x 0.9m

Code ZB001  
 Height 72cm  
 Width 150cm  
 Depth 90cm



Dining Table Triangular 1.25m

Code ZB005  
 Height 72cm  
 Width 125cm  
 Depth 125cm



Stool

Code ZB014  
 Height 42cm  
 Width 44cm  
 Depth 44cm



Bench Seat 100cm & 150cm

Code (100cm) ZB015  
 Code (150cm) ZB011  
 Height 42cm  
 Width (100cm) 100cm  
 Width (150cm) 150cm  
 Depth 35cm



Bar Table 1.5m x 0.9m

Code ZB003  
 Height 110cm  
 Width 150cm  
 Depth 90cm



Bar Height Bench 1.5m

Code ZB013  
 Height 70cm  
 Width 150cm  
 Depth 35cm



Farmers Dining Table 1.8m x 0.85m

Code FM005  
 Height 75cm  
 Width 180cm  
 Depth 85cm



Farmers Dining Bench 1.8m

Code FM006  
 Height 42cm  
 Width 180cm  
 Depth 40cm

## VENICE

The Venice range encapsulates stylish simplicity whilst being practical and maintenance free. The grey chair, tables and backless bench are made from brushed aluminium frames with hand painted, wood effect aluminium slats. The chair and square dining table also come in a sophisticated black and on-trend tan with polywood slats. Complete the look with the Venice Modular sofa which can be configured to suit your needs, whether a traditional 2 seater, or a cosy corner.



# VENICE



**Stacking Armchair Black**

Code VC003  
Height 88cm  
Width 54cm  
Depth 57cm



**Stacking Armchair Tan**

Code VC004  
Height 88cm  
Width 54cm  
Depth 57cm



**Stacking Armchair Grey**

Code BA009  
Height 88cm  
Width 54cm  
Depth 57cm



**Bar Chair Grey**

Code BA007  
Height 113cm  
Width 46cm  
Depth 51cm



**Bar Table Grey 0.7m²**

Code BA008  
Height 110cm  
Width 70cm  
Depth 70cm



**Dining Table Black 0.8m²**

Code VC013  
Height 76cm  
Width 80cm  
Depth 80cm



**Dining Table Tan 0.8m²**

Code VC014  
Height 76cm  
Width 80cm  
Depth 80cm



**Dining Table Grey 0.9m²**

Code BA010  
Height 76cm  
Width 90cm  
Depth 90cm



**Dining Table Grey 1.8m x 0.9m**

Code BA013  
Height 76cm  
Width 180cm  
Depth 90cm



**Backless Bench Grey 1.5m**

Code BA014  
Height 45cm  
Width 150cm  
Depth 40cm



**Modular Single Unit w/Cushions**

Code VC022  
Height 65cm  
Width 71cm  
Depth 80cm



**Modular Corner Unit w/Cushions**

Code VC021  
Height 65cm  
Width 80cm  
Depth 80cm



**Coffee Table 1.05m x 0.65m**

Code VC020  
Height 46cm  
Width 105cm  
Depth 65cm

## TOULOUSE

Toulouse is our most popular metal collection and is for those wanting to add a pop of colour to their alfresco dining space. There are 6 stocked colours - some in a vintage finish with areas of exposed framework and they can be powder coated to any RAL colour. The Toulouse Bar Chair has an optional seat pad and this is available in both mid and bar height. The signature firepit table will create an eye-catching feature, especially when paired with the Swivel or Cannes Stools.







TOULOUSE



Armchair Black

Code TLAC001  
 Height 85cm  
 Width 39cm  
 Depth 48cm



Vintage Finish

Armchair White

Code TLAC002  
 Height 85cm  
 Width 39cm  
 Depth 48cm



Armchair Light Blue

Code TLAC003  
 Height 85cm  
 Width 39cm  
 Depth 48cm



Round Dining Table Black 0.7m

Code TLDR00170  
 Height 75cm  
 Width 70cm



Vintage Finish

Round Dining Table White 0.7m

Code TLDR00270  
 Height 75cm  
 Width 70cm



Concrete HPL

Pedestal Dining Table 0.7m<sup>2</sup>

Code CHA010  
 Height 75cm  
 Width 70cm  
 Depth 70cm



Armchair Olive Green

Code TLAC004  
 Height 85cm  
 Width 39cm  
 Depth 48cm



Vintage Finish

Armchair Yellow

Code TLAC005  
 Height 85cm  
 Width 39cm  
 Depth 48cm



Vintage Finish

Armchair Grey

Code TLAC007  
 Height 85cm  
 Width 39cm  
 Depth 48cm



Square Dining Table Black 0.7m<sup>2</sup>

Code TLDS00170  
 Height 75cm  
 Width 70cm  
 Depth 70cm



Vintage Finish

Square Dining Table White 0.7m<sup>2</sup>

Code TLDS00270  
 Height 75cm  
 Width 70cm  
 Depth 70cm

# TOULOUSE



**Mid/Bar Height Chair Light Blue**

Code (mid) TLAC003/MH  
 Code (bar) TLAC003/PH  
 Height (mid) 108cm  
 Height (bar) 117cm  
 Width 62cm  
 Depth 57cm



**Mid/Bar Height Chair White**

Code (mid) TLMH002  
 Code (bar) TLAC002/PH  
 Height (mid) 108cm  
 Height (bar) 117cm  
 Width 62cm  
 Depth 57cm

Vintage Finish



**Mid/Bar Height Chair Olive Green**

Code (mid) TLAC004/MH  
 Code (bar) TLC004/PH  
 Height (mid) 108cm  
 Height (bar) 117cm  
 Width 62cm  
 Depth 57cm



**Square Bar Table Black 0.7m²**

Code TLBTS00170  
 Height 105cm  
 Width 70cm  
 Depth 70cm

Vintage Finish



**Round Bar Table Black 0.7m**

Code TLBTR00170  
 Height 105cm  
 Width 70cm

Vintage Finish



**Pedestal Bar Height Table 0.7m²**

Code CHA011  
 Height 111cm  
 Width 70cm  
 Depth 70cm  
 HPL top

Vintage Finish



**Seat Pad for Armchair/Mid/Bar**

Code TLACCUSH



**Swivel Stool White**

Code VINT014  
 Height 62-80cm  
 Width 34cm  
 Depth 34cm



**Swivel Stool Grey**

Code VINT017  
 Height 62-80cm  
 Width 34cm  
 Depth 34cm

Vintage Finish



**Bar Height Fire Pit Table 1.2m²**

Code CHA040  
 Height 105cm  
 Width 120cm  
 Depth 120cm

Ceramic Top



**Swivel Stool Pink**

Code VINT016  
 Height 62-80cm  
 Width 34cm  
 Depth 34cm



**Swivel Stool Green**

Code VINT018  
 Height 62-80cm  
 Width 34cm  
 Depth 34cm



**Cannes Bar Stool**

Code CAN001  
 Height 65cm  
 Width 60cm  
 Depth 35cm

## CASSIS

The Cassis range is sleek, stylish and minimalistic with its angled design and accent timber armrests. The stacking chairs are available in 4 on-trend colours and pair with either the wood effect or marble HPL table tops.





**Armchair White**

Code CAA002  
 Height 84cm  
 Width 56cm  
 Depth 54cm



**Armchair Red**

Code CAA009  
 Height 84cm  
 Width 56cm  
 Depth 54cm



**Armchair Green**

Code CAA004  
 Height 84cm  
 Width 56cm  
 Depth 54cm



**Armchair Blue**

Code CAA003  
 Height 84cm  
 Width 56cm  
 Depth 54cm



**Dining Table Wood Effect 0.7m<sup>2</sup>**

Code CADTWOOD  
 Height 75cm  
 Width 70cm  
 Depth 70cm



**Dining Table Marble Effect 0.7m<sup>2</sup>**

Code CADTMRB  
 Height 75cm  
 Width 70cm  
 Depth 70cm



**Coffee Table 0.5m<sup>2</sup>**

Code CACT002  
 Height 56cm  
 Width 50cm  
 Depth 50cm

## MADRID

Madrid is perfect for restaurants, bistros and cafés - it is very hardwearing, durable and virtually maintenance free. Available in a vibrant range of colours, it will brighten up any outdoor space. The chairs, bar stools and tables are all stackable making it easy to pack away and store.





Polished Finish

Stacking Armchair Black

Code PA204  
Height 85cm  
Width 57cm  
Depth 60cm



Polished Finish

Stacking Armchair Grey

Code PA202  
Height 85cm  
Width 57cm  
Depth 60cm



Polished Finish

Stacking Armchair Blue

Code PA200  
Height 85cm  
Width 57cm  
Depth 60cm



Matt Finish

Stacking Side Chair Black

Code PA220  
Height 83cm  
Width 43cm  
Depth 57cm



Matt Finish

Stacking Side Chair Orange

Code PA221  
Height 83cm  
Width 43cm  
Depth 57cm



Matt Finish

Stacking Side Chair Army Green

Code PA219  
Height 83cm  
Width 43cm  
Depth 57cm



Polished Finish

Stacking Armchair Yellow

Code PA205  
Height 85cm  
Width 57cm  
Depth 60cm



Polished Finish

Stacking Armchair Green

Code PA206  
Height 85cm  
Width 57cm  
Depth 60cm



Matt Finish

Stacking Side Chair Mustard

Code PA218  
Height 83cm  
Width 43cm  
Depth 57cm



Matt Finish

Bar Chair Black

Code PA223  
Height 104cm  
Width 44cm  
Depth 50cm



Matt Finish

Bar Chair Orange

Code PA224  
Height 104cm  
Width 44cm  
Depth 50cm



Polished Finish

Square Table Black 0.8m<sup>2</sup>

Code PA214  
Height 73cm  
Width 80cm  
Depth 80cm



Polished Finish

Square Table Grey 0.8m<sup>2</sup>

Code PA212  
Height 73cm  
Width 80cm  
Depth 80cm



Polished Finish

Square Table Blue 0.8m<sup>2</sup>

Code PA210  
Height 73cm  
Width 80cm  
Depth 80cm



Matt Finish

Bar Chair Army Green

Code PA226  
Height 104cm  
Width 44cm  
Depth 50cm



Matt Finish

Bar Chair Mustard

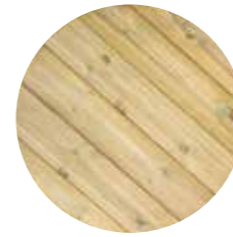
Code PA228  
Height 104cm  
Width 44cm  
Depth 50cm

## TABLE TOPS

Choose from rustic timber table tops, sleek and stylish marble and porcelain or maintenance free high pressure laminate (HPL). Available in round, square and rectangular with many different colours and designs to choose from, our table tops are designed to go with any of the table bases on pages 94/95. The iPan wireless charging port to any of our timber and HPL table tops.

Derwen tops can be supplied in their natural colour or stained or painted to any RAL colour.

## TABLE TOPS



Derwen Timber Round

Code WR092  
Width 70cm  
Code WR093  
Width 80cm



Derwen Timber Square/Rectangular

Code WR094  
Width/Depth 58cm  
Code WR090  
Width/Depth 72.5cm  
Code WR091  
Width 120cm  
Depth 72.5cm



Wireless Charging Port



Porcelain Azure



Porcelain Black Calacatta



Porcelain Verde Alpi



Solid Quartz Bianco Marmi



Solid Marble Verde Rajasthan



HPL Tarnished Silver



HPL City



HPL Terazzo



HPL Ponderosa Grey



NEW FOR  
**2025**

**TABLE BASES**

Our range of table bases are compatible with any of our HPL, marble, porcelain and timber table tops found on pages 92/93. With dining height and bar height available in both traditional and contemporary designs, we can create the perfect combination for your venue. New for 2025 are Tulip, Tudor, Apex and Cubic bases. Our Cubic base is able to accommodate a parasol.



**Décor Rectangular Dining Black**

Code	DECORRECT
Height	73cm
Width	91cm
Depth	60cm



**Décor Bar Black**

Code	DECORPOS
Height	109cm
Width	55cm
Depth	55cm



**Décor Dining Black**

Code	DECORBASE
Height	73cm
Width	60cm
Depth	60cm



**Regency Flip Top Dining Height**

Code	REG001/2/3
Height	72cm
Width	48cm
Depth	48cm

Available in Black, Silver & White



**Regency Flip Top Bar Black**

Code	REG010/11/12
Height	105cm
Width	48cm
Depth	48cm

Available in Black, Silver & White



**Mesh Dining Height**

Code	MESH001
Height	74cm
Width	52cm



**Rustic Barrel**

Code	WR200
Height	100cm
Width	80cm
Depth	80cm



**Tulip Dining Height**

Code	TUL001
Height	72cm
Width	55cm
Depth	55cm

NEW FOR 2025



**Tulip Bar Height**

Code	TUL002
Height	104cm
Width	55cm
Depth	55cm

NEW FOR 2025



**Tudor Dining Height**

Code	TUD001
Height	72cm
Width	55cm
Depth	55cm

NEW FOR 2025



**Apex Dining Height**

Code	APEX001
Height	72cm
Width	60cm
Depth	60cm

NEW FOR 2025



**Cubic Dining Height**

Code	CUB001
Height	72cm
Width	50cm
Depth	50cm

NEW FOR 2025

Accommodates a parasol



**CLASSIC PARASOLS**

Our range of hardwood parasols are operated using a pulley and locking pin system to allow easy opening. The frame is made from FSC hardwood and the canopy is made from a hard-wearing Polyester that has a scotchguard treatment and is UV resistant to grade 6. We stock 10 vibrant colours and parasol canopies can have logo printing added.



2.1m Parasol - Cream  
Code UM008/C



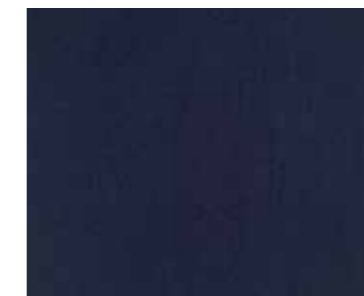
2.1m Parasol - Taupe  
Code UM008/TA



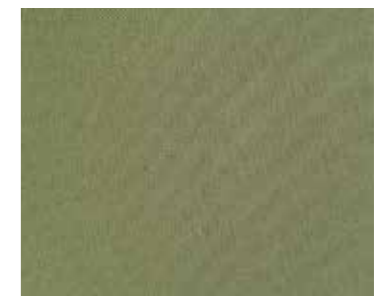
2.1m Parasol - Yellow  
Code UM008/Y



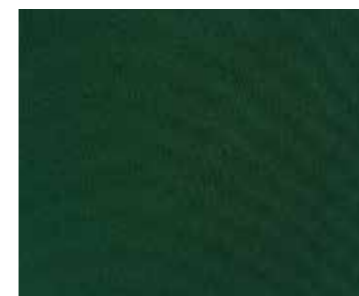
2.1m Parasol - Orange  
Code UM008/ORG



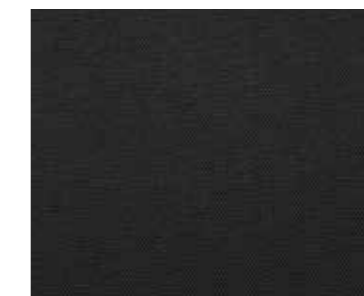
2.1m Parasol - Navy Blue  
Code UM008/B



2.1m Parasol - Sage Green  
Code UM008/SAGE



2.1m Parasol - Green  
Code UM008/G



2.1m Parasol - Black  
Code UM008/BL



2.1m Parasol - Dark Grey  
Code UM008/DG



2.1m Parasol - Aqua  
Code UM008/AQ



Composite Base 15kg  
Code UM024



Granite Base  
Code (11kg) UM023  
Code (30kg) UM036

### STAINLESS STEEL ARUBA PARASOLS

Our range of Stainless Steel parasols have a simple push-up and locking pin system to allow for easy opening. The 48mm single length pole is extremely strong - much stronger and more robust than parasols with 2-piece poles. The spokes are reinforced meaning you can be worry free if the wind picks up and we carry spare parts that can be easily replaced. The canopy is made from 300gsm Polyester with a UV resistance to grade 6. We stock 2 vibrant colours and can have bespoke canopies made in Recasens high performance outdoor fabric.



2.1m Parasol - Black  
Code UM210/B



2.5m Parasol - Red  
Code UM250/R



Recasens - Titanio  
Code R-196



Recasens - Antracita  
Code R-164



Recasens - Jeans  
Code R-236



Recasens - Linen  
Code R-217



Recasens - Aridane  
Code R-707



Recasens - Blanco Gris  
Code R-061



Composite Base 15kg  
Code UM024



Granite Base  
Code (11kg) UM023  
Code (30kg) UM036

NEW FOR  
**2025**

## ALUMINIUM CAFÉ PARASOLS

A premium and lightweight aluminium framed parasol, built to ensure the elements all year round. Using a pulley system to effortlessly open and close the parasol, when closed the Cafe stores neatly away in a compact vertical format. With a range of bases available, the Cafe can be installed into an in-ground sleeve, a free-standing deckplate or concrete weighted base. Able to withstand winds of up to 60 km/hr (when ground anchored), the Cafe is perfect for exposed terraces.



Round Parasol

Code (2.8m) UMI280  
Code (4.2m) UMI420



Square Parasol

Code (2.0m) UMI200  
Code (3.0m) UMI300



Galvanised Steel Base

Code UMI201



Concrete Base

Code UMI202



In-Ground Base

Code UMI203

### Standard Colours



### Non Standard Colours



NEW FOR  
**2025**

## ALUMINIUM CANTILEVER PARASOLS

New for 2025, our high-performance, heavy duty cantilever parasols are designed to shelter your outdoor space, maximising the space covered with no central mast. Full 360 degree rotation and unlimited tilt motion gives maximum shade coverage. The cantilever can be installed into an in-ground sleeve, a deckplate or a weighted free-standing base. Able to withstand winds of up to 65 km/hr (when ground anchored) and an additional stabiliser bar can be added when installed in more exposed areas.



## ALUMINIUM CANTILEVER PARASOLS



### Square Cantilever

Code (3.0m) UMIC300  
Code (3.5m) UMIC350

### Round Cantilever

Code (4.0m) UMIC400

### Rectangular Cantilever

Code (3.0m x 4.0m) UMIC430



### Freestanding Base

Code UMIC204



### Stainless Steel Base Plate

Code UMIC205



### In-Ground Base

Code UMIC206

### Standard Colours



### Non Standard Colours



## HEATERS

We offer a range of free standing gas patio heaters, in a variety of styles, all of which are compatible with Calor patio gas. For wall-mounted heating, we have both single and double infrared heat lamps, available in either white or anthracite. These can also be mounted to our pergolas and awnings.



## HEATERS



**Pyramid Gas Heater 11kw**

Code	SH016
Height	220cm
Width	53cm
Depth	53cm



**Coliseum Gas Heater 15kw**

Code	SH030
Height	210cm
Width	54cm
Depth	54cm



**Cube Gas Heater 5kw**

Code	SH025
Height	126cm
Width	42cm
Depth	42cm



**Goliath Gas Heater 15kw**

Code	SH022
Height	230cm
Width	88cm
Depth	88cm



**Athena Gas Heater 8kw**

Code	SH035
Height	218cm
Width	75cm
Depth	75cm



**Quartz Heat Lamp 1.5kw**

Code (white)	UMB/H/QL
Width	52cm
Code (black)	UMB/H/QL/B
Width	52cm



**Double Quartz Heat Lamp 3kw**

Width	104cm
-------	-------



**Timer Switch 3kw**

BANNERS

Our range of banners can be used as partitions, as well as being a great branding opportunity. Available in a variety of styles including vinyl, fabric and acrylic, all can be personalised and digitally printed with your company logo. The sturdy, stainless steel uprights together with the heavy duty cross beams mean your banners are built to last and can withstand even the most inclement weather.



Vinyl Screens

Code	BP021
Width/Height	120cm x 90cm
Width/Height	150cm x 90cm
Width/Height	180cm x 90cm

Custom graphics

Fabric Screens

Code	BP023
Width/Height	120cm x 90cm
Width/Height	150cm x 90cm
Width/Height	180cm x 90cm

Custom graphics

Acrylic Screens

Code	BP030
Width/Height	120cm x 90cm
Width/Height	150cm x 90cm
Width/Height	180cm x 90cm

Custom graphics



Stainless Steel Post 16kg

Code	BP001
Height	100cm
Width	35cm
Pole DM	5cm



Quad Steel Post Black 19kg

Code	QP001
Height	100cm
Width	40cm
Pole DM	6cm



## STEEL PLANTERS

Our planters are a great alternative to banners for creating a partition or to add some colour to an alfresco space. Our range of steel, heavy duty planters are available in 5 on-trend colours, come in varying lengths and heights and can be stacked to create an eye catching feature.



## STEEL PLANTERS



Stacking Planter 40cm Small

Code	HEX001
Height	20cm
Width	40cm
Depth	40cm



Stacking Planter 40cm Medium

Code	HEX001
Height	40cm
Width	40cm
Depth	40cm



Stacking Planter 40cm Large

Code	HEX001
Height	80cm
Width	40cm
Depth	40cm



Stacking Planter 80cm Small

Code	HEX001
Height	20cm
Width	80cm
Depth	40cm



Stacking Planter 80cm Medium

Code	HEX001
Height	40cm
Width	80cm
Depth	40cm



Stacking Planter 80cm Large

Code	HEX001
Height	80cm
Width	80cm
Depth	40cm



Stacking Planter 120cm Small

Code	HEX001
Height	20cm
Width	120cm
Depth	40cm



Stacking Planter 120cm Medium

Code	HEX001
Height	40cm
Width	120cm
Depth	40cm



Stacking Planter 120cm Large

Code	HEX001
Height	80cm
Width	120cm
Depth	40cm

## TIMBER PLANTERS

Our timber planters are made from FSC Pine. They come in square and rectangular and can be supplied in the rustic Pine finish or we can paint them to any RAL colour, add your logo and castors can be added, allowing the planters to be easily moved, giving you flexibility.



### Square Planter

Code	SPT001
Height	102cm
Width	50cm
Depth	50cm

RAL painting & custom graphics available

### Rectangular Planter

Code	RPT002
Height	100cm
Width	121cm
Depth	46cm

RAL painting & custom graphics available





## CUSHION BOXES

Protect your outdoor cushions with a cushion box in either synthetic weave or sturdy aluminium. The weave cushion boxes come pre-lined with a weatherproof canvas and the aluminium boxes are water tight, to ensure cushions stay dry when stored.



**Weave Cushion Box Large**

Code (grey) CBOX001  
 Height 95cm  
 Width 170cm  
 Depth 80cm

**Weave Cushion Box Large**

Code (sand) CBOX001  
 Height 95cm  
 Width 170cm  
 Depth 80cm



**Aluminium Cushion Box Medium**

Code (grey) CBOX001  
 Height 78cm  
 Width 127cm  
 Depth 66cm

**Aluminium Cushion Box Medium**

Code (green) CBOX001  
 Height 78cm  
 Width 127cm  
 Depth 66cm



**Aluminium Cushion Box Large**

Code (grey) CBOX001  
 Height 92cm  
 Width 160cm  
 Depth 86cm

**Aluminium Cushion Box Large**

Code (green) CBOX001  
 Height 92cm  
 Width 160cm  
 Depth 86cm



## COVER SOLUTIONS

Showpiece Design specialise in cover solutions and our products are designed to maximise your outdoor space year-round which will enable you to increase your profitability. Whether you are looking for shade from the sun or protection from the rain, we will work with you to find the perfect cover solution for your venue, whether it be an awning, a giant umbrella, a bespoke roof system or a pergola.



## PERGOLAS

The Titan Pergola is an award winning design, perfect for adding a stylish, covered area to your outdoor space. The manually operated louvered roof blades switch from closed to open in seconds, depending on the weather. With 9 size options available, you can choose from either wall mounted or free standing pergolas. There are 3 frame colours to choose from and there are optional extras including pull down privacy screens, louvered wall panels, LED lights and infrared heaters.





**Pergola 3.0m x 3.0m**

Code (LED)	PERG001/L
Code (Non-LED)	PERG001
Height	250cm
Width	300cm
Depth	300cm
Anthracite, Pebble, Wood Effect	



**Pergola 3.6m x 3.0m**

Code (LED)	PERG007/L
Code (Non-LED)	PERG007
Height	250cm
Width	360cm
Depth	300cm
Anthracite, Pebble	



**Pergola 3.6m x 3.6m**

Code (LED)	PERG002/L
Code (Non-LED)	PERG002
Height	250cm
Width	360cm
Depth	360cm
Anthracite	



**Pergola 7.2m x 3.6m**

Code (LED)	PERG012/L
Code (Non-LED)	PERG012
Height	250cm
Width	720cm
Depth	360cm
Anthracite, Pebble	



**Pergola 8.0m x 3.0m**

Code (LED)	PERG013/L
Code (Non-LED)	PERG013
Height	250cm
Width	800cm
Depth	300cm
Anthracite	



**Pergola 9.0m x 3.0m**

Code (LED)	PERG014/L
Code (Non-LED)	PERG014
Height	250cm
Width	900cm
Depth	300cm
Anthracite	



**Pergola 4.0m x 3.0m**

Code (LED)	PERG003/L
Code (Non-LED)	PERG003
Height	250cm
Width	400cm
Depth	300cm
Anthracite, Pebble, Wood Effect	



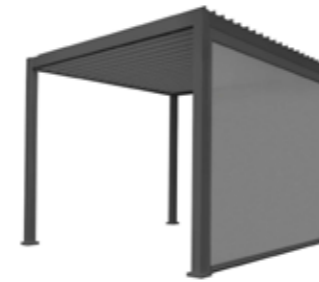
**Pergola 4.0m x 3.6m**

Code (LED)	PERG008/L
Code (Non-LED)	PERG008
Height	250cm
Width	400cm
Depth	360cm
Anthracite, Pebble	



**Pergola 5.3m x 3.0m**

Code (LED)	PERG009/L
Code (Non-LED)	PERG009
Height	250cm
Width	530cm
Depth	300cm
Anthracite	



**Privacy Screen**

Code (3.0m)	PERG005
Code (3.6m)	PERG015
Code (4.0m)	PERG006
Anthracite, Pebble	



**Louvered Side Wall**

Code (1.0m)	PERG016
Code (1.2m)	PERG017
Code (1.33m)	PERG018
Anthracite, Pebble	



**Solid Wall Panel**

Code	PERG019
Width	31cm
Anthracite, Pebble, Wood Effect	



**Pergola 5.3m x 3.6m**

Code (LED)	PERG010/L
Code (Non-LED)	PERG010
Height	250cm
Width	530cm
Depth	360cm
Anthracite	



**Pergola 6.0m x 3.0m**

Code (LED)	PERG004/L
Code (Non-LED)	PERG004
Height	250cm
Width	600cm
Depth	300cm
Anthracite, Pebble, Wood Effect	



**Pergola 6.0m x 3.6m**

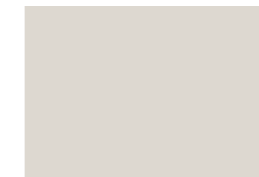
Code (LED)	PERG011/L
Code (Non-LED)	PERG011
Height	250cm
Width	600cm
Depth	360cm
Anthracite, Pebble	

**Frame Colours Available**

Anthracite



Pebble



Wood Effect



## AWNINGS

Whether you are looking for a fixed or retractable awning, in a manual, traditional design or a contemporary, motorized design, we will work with you to create the perfect awning for your venue. They can be wall-mounted, attached to a goal post frame or a back to back structure to cover a larger area. All awnings are made to measure with a huge variety of weather resistant fabrics to choose from which can be digitally printed for great branding opportunity.



## GIANT UMBRELLAS

Manufactured in Germany, our giant umbrellas can span up to 56m<sup>2</sup>, giving you extensive coverage of your patio area. Depending on your requirements they can be used as sun and rain protection and for particularly windy areas, including coastal, we have the strong wind that has been wind speed tested up to 120km/hr.

There are 40 fabric colours to choose from and canopies can be printed with your company logo. Choose from many accessories including LED lighting, quartz heaters, phone charging ports and outdoor speakers.

Giant umbrellas can be ground anchored or we have a variety of free standing bases, depending on the floor type you have.

We also offer a winter refurbishment service where we will service your umbrella and clean the canopy, reimpregnating it with a protective coating.

### TYPICAL SPEC - ALBATROS

- Mast Diameter 100mm
- Spoke Dimensions 50mm x 25mm
- 4m Round – 10m Round
- 3m<sup>2</sup> - 7m<sup>2</sup>
- 3m x 4m – 7m x 8m
- Reinforced Spokes

### TYPICAL SPEC - SCHATELLO

- Mast Diameter 76mm
- Spoke Dimensions 35mm x 20mm
- 3m Round – 6m Round
- 3m<sup>2</sup> - 5m<sup>2</sup>
- 2m x 3m – 4.5m x 5.5m
- Reinforced Spokes



## ROOF SYSTEMS

Showpiece Design are the proud UK supplier and installer of Corradi roof systems. The roof systems are an all weather cover solution, turning an outdoor space into an outdoor room that can be used all-year round.

Manufactured in Italy, each system is made to order meaning the possibilities are endless. The systems can be wall mounted and be an extension of a building, or completely free-standing. The roof consists of either louvered blades or a fully retractable roof, both controlled by remote control, to allow sunlight in and keep rain out.

There are a huge range of extras that can be added including LED lighting, heating, retractable screens and glass sliding doors. The frames are made from aluminum and come in a choice of 15 finishes and can seamlessly blend in with the garden, the building or even the interiors.

MASTER DEALER  
**Corradi**  
OUTDOOR LIVING SPACE







## TERMS & CONDITIONS

### 1 Interpretation in these Conditions:

'BUYER' or 'YOU' means the person who accepts a quotation of the Seller for the sale of the 'Goods' and whose acceptance is then confirmed by the Seller in accordance with these conditions or whose order for the 'Goods' is accepted by the seller

'GOODS' means the goods (including any instalment of the goods or any parts for them) which the seller is to supply in accordance with these conditions

'SELLER' or 'WE' or 'US' or 'OUR' means SHOWPIECE DESIGN LIMITED

'CONDITIONS' means the standard terms and conditions of sale set out in this document and (unless the context otherwise requires) includes any special terms and conditions agreed in writing between the buyer and the Seller or set out in the Quotation Order or Acceptance Forms issued by the Seller • 'CONTRACT' means the contract for the purchase and sale of the Goods

'WRITING' includes telex, cable, e-mail, facsimile transmission and comparable means of communication

Any reference in these Conditions to any provision of a Statute shall be construed as a reference to that provision as amended, re-enacted or extended at that relevant time.

The headings in these Conditions are for convenience only and shall not affect their interpretation.

### 2 Updating Range

Our range of products is continually being revised and updated. We reserve the right to change specifications without prior notice.

### 3 Specifications

All descriptions, illustrations and sizes given in this catalogue are for guidance only and no particulars therein shall be binding on the company.

### 4 Samples

Prior to a bulk order, we are able to supply samples on selected items. Please call for details.

### 5 Price/Discounts

All prices are quoted exclusive of VAT. Please refer to ordering information for details. Showpiece Design Limited reserves the right to alter any prices/discounts at any time without prior notice.

### 6 Minimum Order

There is a minimum order of £750.00 + VAT. Any orders received below this value will be subject to a small order charge of £75.00 + VAT.

### 7 Delivery & Risk

Delivery lead-times are given in good faith and Showpiece Design Limited will not be responsible for any kind of delay in transit. We accept no liability and the buyer has no right to cancel the order if delivery is delayed beyond the estimated time unless we have specifically agreed in writing to deliver on a particular date.

Prior to dispatch great care is taken to inspect and package all goods. Upon receipt of a delivery, all goods must be examined for damage before signing the carrier's note. In the event that goods are damaged, the carrier's note should be endorsed accordingly, the goods should be kept in the original packaging at the buyer's premises for later inspection and Showpiece Design Limited should be notified in writing within 24hrs. Failure to comply with any of the above will be deemed that the goods are acceptable and the buyer unconditionally waives any right to reject the aforementioned goods.

Our liability in respect of loss or damage to goods shall not exceed the invoice value of the goods (excluding VAT) and our liability shall in no event extend to consequential or indirect loss or damage, loss to third parties or loss of business. The goods must be delivered to the delivery address agreed with Showpiece Design Limited.

Under no circumstances should the carrier be instructed by the buyer to deliver to another address or to leave the goods elsewhere. If the buyer, or a representative of the buyer is not available to check and take delivery of the goods at the delivery address, this may result in the carrier needing to return on another date and a delivery surcharge to the buyer may apply.

### 8 Payments

Non-account buyers must submit payment with their order. When paying by cheque, please allow 5 working days for funds to clear before goods can be released.

Credit accounts may be applied for following a minimum of 3 months regular trading with Showpiece Design Limited on payment with order basis. Terms of trade are 30 days Nett and any account outstanding for more than 30 days may be charged interest at 4% above Barclays Bank PLC lending rate. We reserve the right to refuse or withdraw credit accounts at any time. All accounts are 30 days NETT, unless otherwise agreed by Showpiece Design Limited in writing. Showpiece Design Limited reserves the right to charge any legal costs on pursuant claims, regardless of location. Interest on overdue payments shall be charged at 2% above the current BOE rate. For outstanding payment arrears, Showpiece Design may pass on your details to a debt recovery company or seek legal action to resolve the matter or clear your account.

### 9 Returns

No goods may be returned to Showpiece Design Limited without our prior consent or after a period of 7 working days. Goods are returned at the buyer's cost and risk. A restocking charge will be made at 20% of the invoice value of all goods returned. Custom made goods are not returnable.

### 9a Warranty Returns

All products, unless otherwise stated are covered with a minimum of 12 months warranty. Any failures during this period should be advised, in writing, to Showpiece Limited and the goods returned for evaluation or correction. Under no circumstances should the goods be discarded. Any attempts to repair the products prior to instruction from Showpiece Design Limited will invalidate the warranty. Showpiece Design Limited reserve the right to repair the products, unless commercially unfeasible.

### 10 Copyright

Copyright of any product manufactured by us or any design, illustration or drawing produced by us remains the sole property of Showpiece Design Limited unless expressly agreed in writing by Showpiece Design Limited.

### 11 Reservation of title

Risk in the Goods shall pass to you when the Goods are delivered and paid in full.

The property of the Goods shall remain with us until you pay all sums due whether in respect of this contract or otherwise.

You shall hold the Goods as our fiduciary agent until title passes.

Until title passes the Goods shall be stored separately from any other Goods and you shall not interfere with any identification mark, labels batch numbers or serial numbers on the Goods.

Until title passes we agree that you may use as principle and not as our agents in the ordinary course of your business subject to the express condition that at our direction the entire proceeds of any sale or insurance proceeds received in respect of the Goods are held in trust for us and not mixed with any other monies or paid into an overdrawn bank account and shall at all times be identifiable as our money.

We shall be entitled to recover the price of the Goods including VAT even though the property in any of the Goods remains with us.

We shall be entitled at any time to recover any or all of the Goods in your possession to which we have title and for that purpose we our servants or agents may with such transport as is necessary enter upon any premises occupied by you or to which you have access and where the Goods may be or are believed to be situated.

Whilst every effort is made to produce colour accurate images, the actual product colours may vary.

Showpiece Design Ltd. reserve the right to change product designs/specifications without prior notice.



Showpiece  
DESIGN

## HEAD OFFICE

Tithe Barn,  
Sulham Lane,  
Pangbourne,  
Berkshire,  
RG8 8DT

Tel: 0118 984 3486

Email: [sales@showpiecedesign.co.uk](mailto:sales@showpiecedesign.co.uk)

Website: [www.showpiecedesign.info](http://www.showpiecedesign.info)

## OUTDOOR

FURNITURE | AWNINGS | UMBRELLAS | PERGOLAS | ROOF SYSTEMS